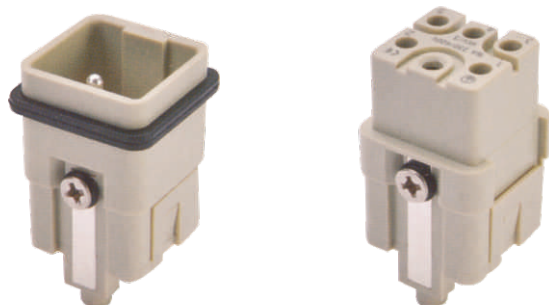


# HQ | Technical characteristics



## Current carrying capacity

The current carrying is limited by maximum temperature of materials for inserts and contacts including terminals

DIN IEC 60512-5 Control and test procedures according to DIN IEC 60512-5

## Specifications

DIN EN 60 664  
DIN EN 61 984

### Inserts

Number of contacts

5+PE

Working current

16A 230/400 V 4 KV 3

Working voltage

Rated impulse voltage

Pollution degree

Pollution degree 2 also

Insulation resistance

Material

Flammability acc.to(UL94)

Limiting temperatures

Mechanical working life (mating cycles)

Working voltage acc.to UL/CSA

16A 320/500 V 4KV 2

$\geq 10^{10} \Omega$

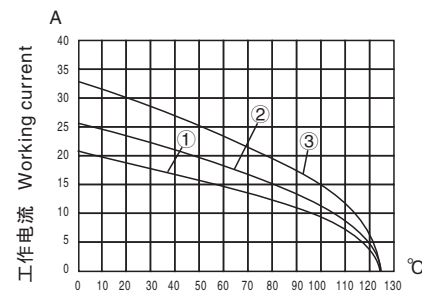
Polycarbonate

VO

$-40^{\circ}\text{C} \sim +125^{\circ}\text{C}$

$\geq 500$

600V



Ambient temperature  
Wire gauge: ① 1.0mm<sup>2</sup>  
② 1.5mm<sup>2</sup>  
③ 2.5mm<sup>2</sup>

### Contacts

Material

Surface

Contact resistance

Terminal

Wire gauge

Wire gauge

Copper alloy

Gold plated

Silver plated

$\leq 1\text{m}\Omega$

Crimp terminal

0.14-4.0mm<sup>2</sup>(AWG26-12)

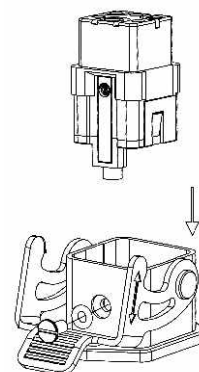
2.5mm<sup>2</sup>(AWG14)

# SO-HQ

Number of contacts

5 +

Insert 230/400V 16A



TYPE

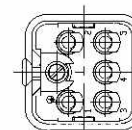
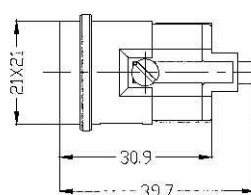
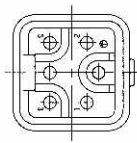
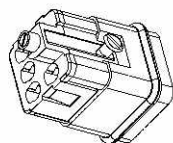
SO-HQ-005/0-MC

SO-HQ-005/0-FC

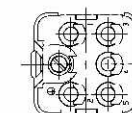
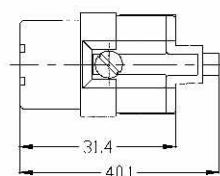
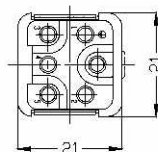
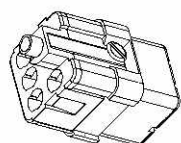
Mounting example

Drawing (Dimensions in mm)

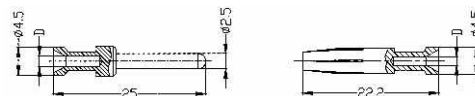
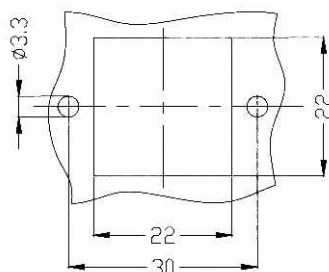
Male insert (MC)



Female insert (FC)



Panel cut out for inserts  
for use without hoods/housings



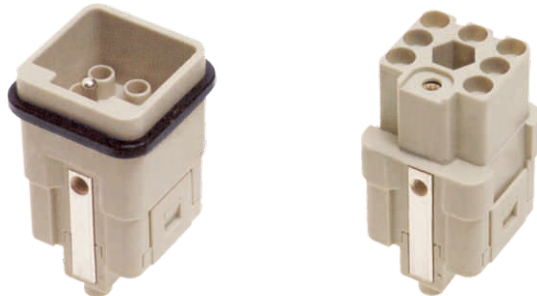
Crimp contacts	Wire gauge		D	Stripping length
Gold plated	0.14-0.37mm <sup>2</sup>	AWG 26-22	0.90mm	7.5mm
	0.5mm <sup>2</sup>	AWG 20	1.10mm	7.5mm
	0.75mm <sup>2</sup>	AWG 18	1.30mm	7.5mm
Silver plated	1.0mm <sup>2</sup>	AWG 18	1.45mm	7.5mm
	1.5mm <sup>2</sup>	AWG 16	1.75mm	7.5mm
	2.5mm <sup>2</sup>	AWG 14	2.25mm	7.5mm
	3.0mm <sup>2</sup>	AWG 12	2.55mm	7.5mm
	4.0mm <sup>2</sup>	AWG 12	2.85mm	7.5mm

Note: Suit hood/housing: Size H3A

Hood/Housing detail on "Hood/Housing" section

Note: Crimp termina of 16A should order contacts pins separately, detail please refer to page 70

# HQ | Technical characteristics



## Current carrying capacity

The current carrying is limited by maximum temperature of materials for inserts and contacts including terminals

DIN IEC 60512-5 Control and test procedures according to DIN IEC 60512-5

## Specifications

### Inserts

Number of contacts

Working current

Working voltage

Rated impulse voltage

Pollution degree

Pollution degree 2 also

Insulation resistance

Material

Flammability acc.to(UL94)

Limiting temperatures

Mechanical working life (mating cycles)

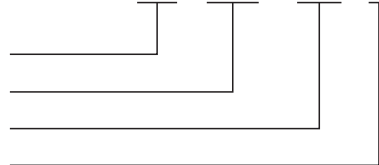
Working voltage acc.to UL/CSA

DIN EN 60 664

DIN EN 61 984

7+PE

10A 400 V 6 KV 3



10A 400/690 V 6KV 2

$\geq 10^{10} \Omega$

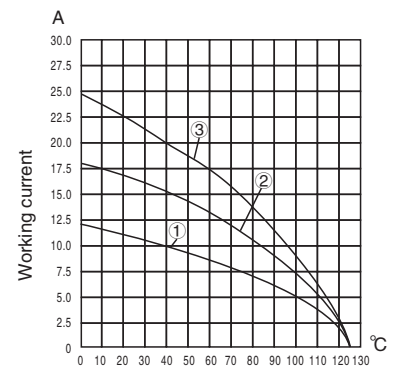
Polycarbonate

VO

$-40^{\circ}\text{C} \sim +125^{\circ}\text{C}$

$\geq 500$

600V



Ambient temperature

Wire gauge: ① 0.75mm<sup>2</sup>

② 1.5mm<sup>2</sup>

③ 2.5mm<sup>2</sup>

### Contacts

Material

Surface

Contact resistance

Terminal

Wire gauge

PE Wire gauge

Copper alloy

Gold plated

Silver plated

$\leq 3\text{m}\Omega$

Crimp terminal

0.14-2.5mm<sup>2</sup>(AWG26-14)

2.5mm<sup>2</sup>(AWG14)

HQ

# SO-HQ

Number of contacts

Insert 400V 10A

7 +



TYPE

SO-HQ-007/0-MC

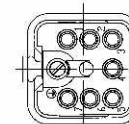
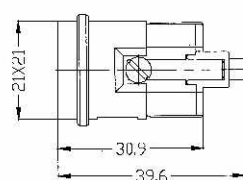
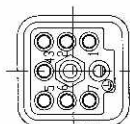
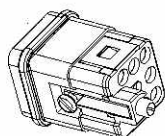
SO-HQ-007/0-FC

SO-KRCP-Q7M

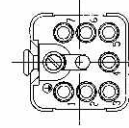
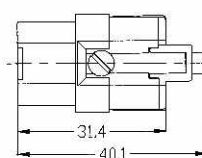
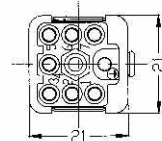
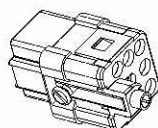
SO-KRCP-Q7F

Drawing (Dimensions in mm)

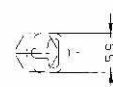
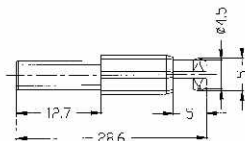
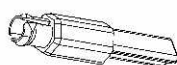
Male insert (MC)



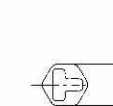
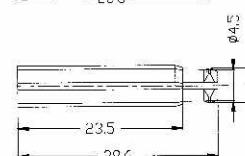
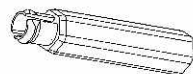
Female insert (FC)



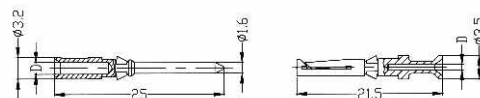
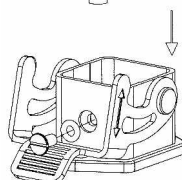
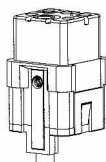
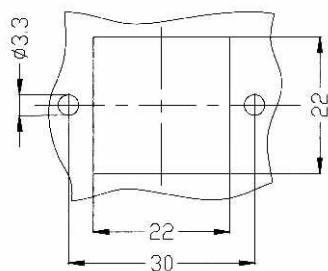
Coding pins (M)



Coding pins (F)



Panel cut out for inserts  
for use without hoods/housings



Crimp contacts	Wire gauge		D	Stripping length
Gold plated	0.14-0.37mm <sup>2</sup>	AWG 26-22	0.90mm	8mm
	0.5mm <sup>2</sup>	AWG 20	1.10mm	8mm
Silver plated	0.75mm <sup>2</sup>	AWG 18	1.30mm	8mm
	1.0mm <sup>2</sup>	AWG 18	1.45mm	8mm
	1.5mm <sup>2</sup>	AWG 16	1.75mm	8mm
	2.5mm <sup>2</sup>	AWG 14	2.25mm	6mm

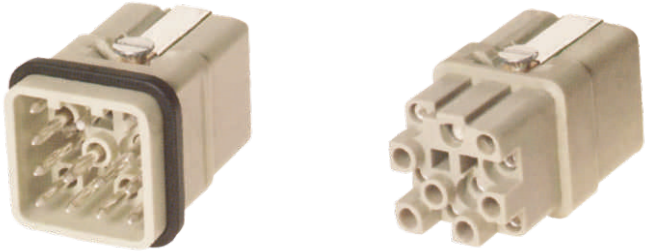
Note: Suit hood/housing: Size H3A

Hood/Housing detail on "Hood/Housing" section

Mounting example

Note: Crimp termina of 10A should order contacts pins separately, detail please refer to page 70

# HQ | Technical characteristics



## Current carrying capacity

The current carrying is limited by maximum temperature of materials for inserts and contacts including terminals

DIN IEC 60512-5 Control and test procedures according to DIN IEC 60512-5

## Specifications

### Inserts

Number of contacts

Working current

Working voltage

Rated impulse voltage

Pollution degree

Pollution degree 2 also

Insulation resistance

Material

Flammability acc.to(UL94)

Limiting temperatures

Mechanical working life (mating cycles)

DIN EN 60 664

DIN EN 61 984

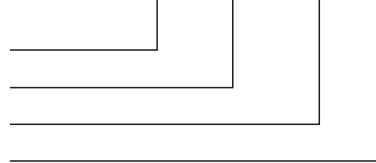
12+PE

10A

400 V

6 KV

3



10 A 400/690 V 6KV 2

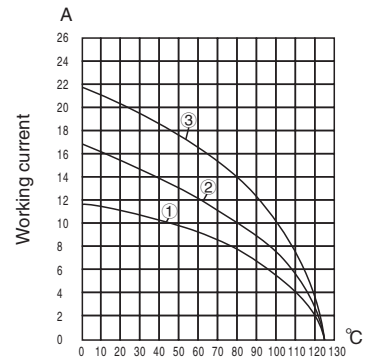
$\geq 10^{10} \Omega$

Polycarbonate

VO

$-40^{\circ}\text{C} \sim +125^{\circ}\text{C}$

$\geq 500$



Ambient temperature

Wire gauge: ① 0.75mm<sup>2</sup>

② 1.5mm<sup>2</sup>

③ 2.5mm<sup>2</sup>

### Contacts

Material

Surface

Contact resistance

Terminal

Wire gauge

Wire gauge

Copper alloy

Gold plated

Silver plated

$\leq 3\text{m}\Omega$

Crimp terminal

0.14–2.5mm<sup>2</sup>(AWG26–14)

0.5–2.5mm<sup>2</sup>(AWG20–14)

# SO-HQ

Number of contacts

12+

Insert 400V 10A



TYPE

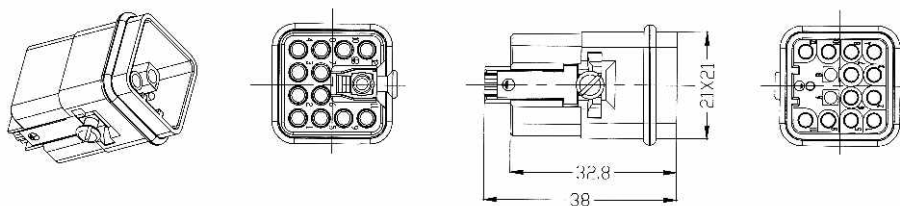
SO-HQ-012/0-MC

SO-HQ-012/0-FC

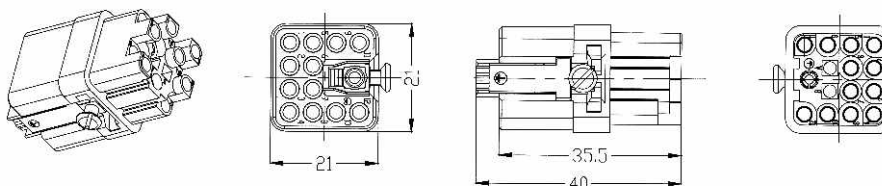
SO-KRCP-Q12

Drawing (Dimensions in mm)

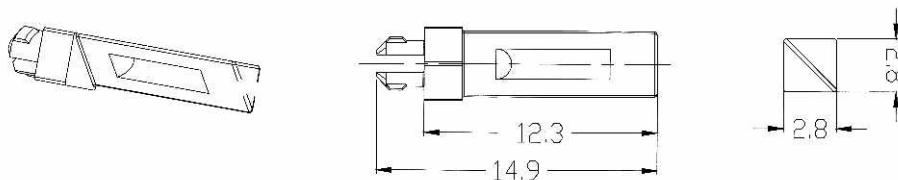
Male insert (MC)



Female insert (FC)

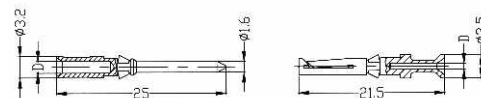
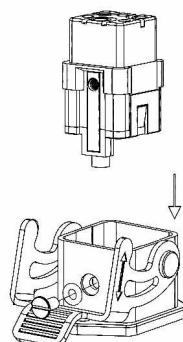
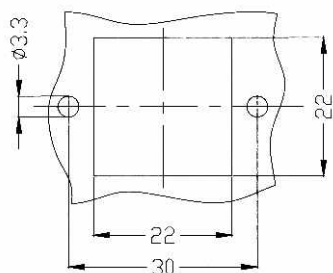


Coding pins (M)



Panel cut out for inserts

for use without hoods/housings



Crimp contacts	Wire gauge		D	Stripping length
Gold plated	0.14-0.37mm <sup>2</sup>	AWG 26-22	0.90mm	8mm
	0.5mm <sup>2</sup>	AWG 20	1.10mm	8mm
	0.75mm <sup>2</sup>	AWG 18	1.30mm	8mm
Silver plated	1.0mm <sup>2</sup>	AWG 18	1.45mm	8mm
	1.5mm <sup>2</sup>	AWG 16	1.75mm	8mm
	2.5mm <sup>2</sup>	AWG 14	2.25mm	6mm

Note: Suit hood/housing: Size H3A

Mounting example

Note: Crimp termina of 10A should order contacts pins separately, detail please refer to page 70

Hood/Housing detail on "Hood/Housing" section