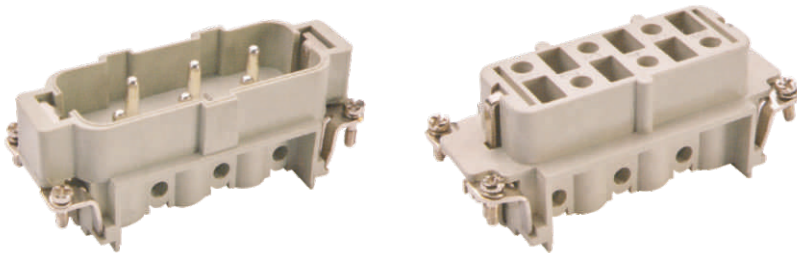


HSB | Technical characteristics



Current carrying capacity

The current carrying is limited by maximum temperature of materials for inserts and contacts including terminals

DIN IEC 60512-5 Control and test procedures according to DIN IEC 60512-5

Specifications

Inserts

Number of contacts

Working current

See current carrying capacity)

Working voltage

Pollution degree

Rated impulse voltage

Insulation resistance

Material

Flammability acc.to(UL94)

Limiting temperatures

Mechanical working life (mating cycles)

Working voltage acc.to UL/CSA

Contacts

Material

Surface

Contact resistance

Terminal

Wire gauge

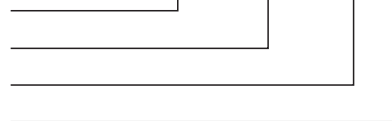
Screw terminal tightening

DIN EN 60 664

DIN EN 61 984

6, 12, (2X6)+PE

35A 400V/690V 3 6KV



$\geq 10^{10} \Omega$

Polycarbonate

VO

-40°C ~ +125°C

≥ 500

600V

Copper alloy

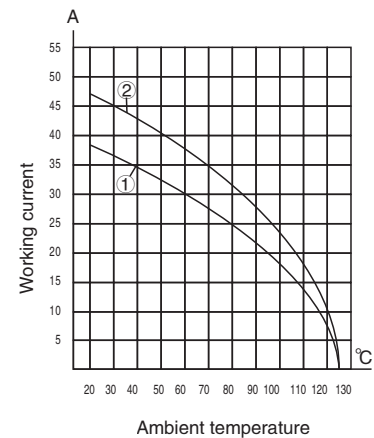
Silver plated

$\leq 1m\Omega$

Screw terminal

4.0-6.0mm²(AWG12-10)

1.2Nm



① wire gauge: 4.0mm²

② wire gauge: 6.0mm²

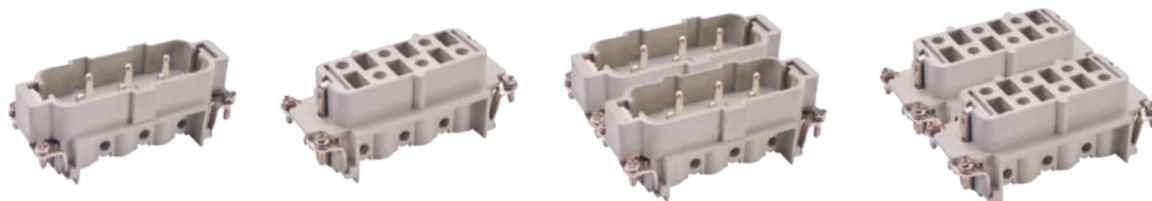
HSB

SO-HSB

Insert 400/690V 35A

Number of contacts

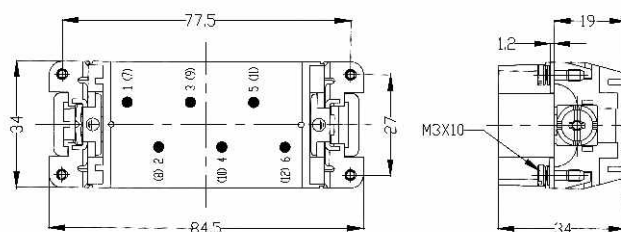
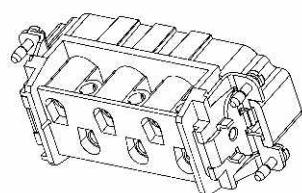
6, 12(2X6) + \oplus



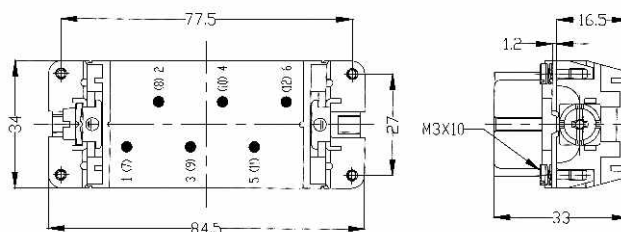
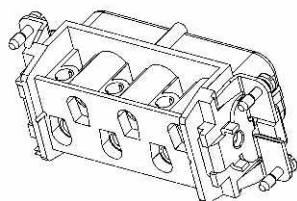
TYPE	SO-HSB-006-M	SO-HSB-006-F	SO-HSB-012-M	SO-HSB-012-F
------	--------------	--------------	--------------	--------------

Drawing (Dimensions in mm)

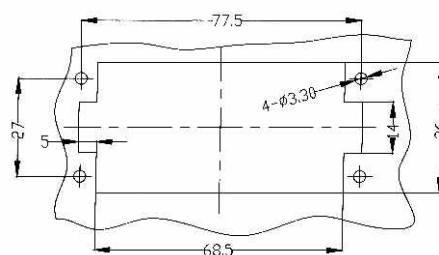
Male insert (M)



Female insert (F)



Panel cut out for inserts
for use without hoods/housings



Note: Suit hood/housing: Size H3A

Hood/Housing detail on "Hood/Housing" section

HSB