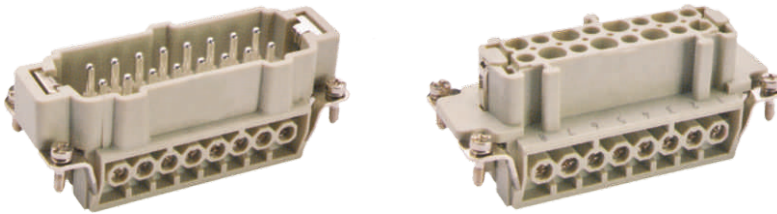


HE | Technical characteristics



Current carrying capacity

The current carrying is limited by maximum temperature of materials for inserts and contacts including terminals

DIN IEC 60512-5 Control and test procedures according to DIN IEC 60512-5

Specifications

Inserts

Number of contacts

DIN EN 60 664
DIN EN 61 984

6, 10, 18, 24, 32, 48
32(2x16), 48(2x24)+PE

Working current

See current carrying capacity)

Working voltage

Pollution degree

Rated impulse voltage

Insulation resistance

Material

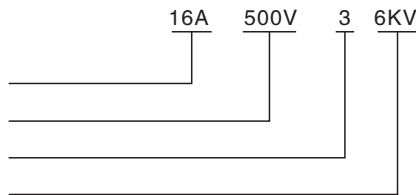
UL94/Flammability acc.to(UL94)

Limiting temperatures

Mechanical working life (mating cycles)

Working voltage acc.to UL/CSA

16A 500V 3 6KV



$\geq 10^{10} \Omega$

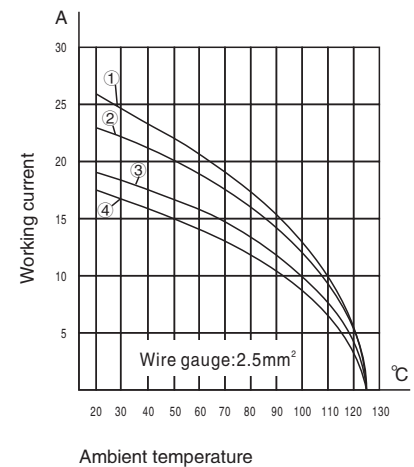
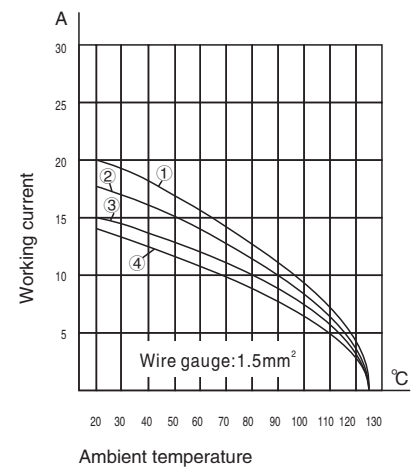
Polycarbonate

VO

-40°C ~ +125°C

≥ 500

600V



Contacts

Material

Surface

Contact resistance

Terminal

Wire gauge

Screw terminal tightening

Stripping length

Copper alloy

Silver plated

$\leq 1m\Omega$

Screw terminal

1.0-2.5mm²(AWG18-14)

0.5Nm

7-9mm

Ambient temperature

①SO-HE-006 ③SO-HE-016

②SO-HE-010 ④SO-HE-024

SO-HE

Number of contacts

Insert 500V 16A

6,10,16,24 +



TYPE SO-HE-006-M



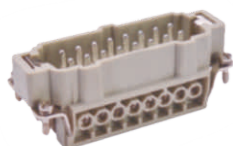
TYPE SO-HE-006-F



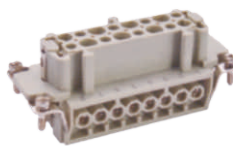
TYPE SO-HE-010-M



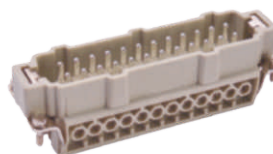
TYPE SO-HE-010-F



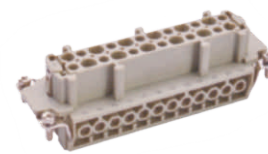
TYPE SO-HE-016-M



TYPE SO-HE-016-F



TYPE SO-HE-024-M

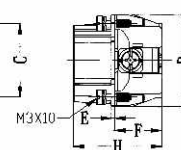
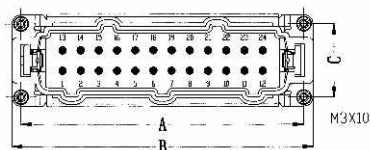
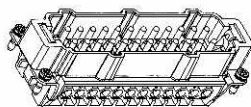


TYPE SO-HE-024-F

Drawing(Dimensions in mm)

HE

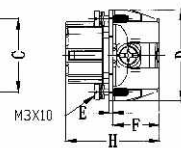
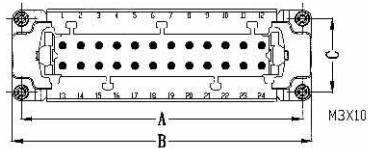
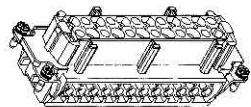
Male insert (M)



Male insert(M)

number of contacts	A	B	C	D	E	F	H
SO-HE-006	44	51	27	34	1.2	17.3	32.4
SO-HE-010	57	64	27	34	1.2	17.3	32.4
SO-HE-016	77.5	84.5	27	34	1.2	17.3	32.4
SO-HE-024	104	111	27	34	1.2	17.3	32.4

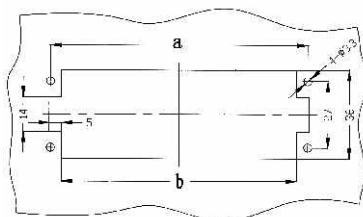
Female insert (F)



Female insert(F)

number of contacts	A	B	C	D	E	F	H
SO-HE-006	44	51	27	34	1.2	17.3	34.6
SO-HE-010	57	64	27	34	1.2	17.3	34.6
SO-HE-016	77.5	84.5	27	34	1.2	17.3	34.6
SO-HE-024	104	111	27	34	1.2	17.3	34.6

Panel cut out for inserts
for use without hoods/housings



Panel cut out

Size	a	b
SO-H6B	44	35
SO-H10B	57	48
SO-H16B	77.5	68.5
SO-H24B	104	95

Note: Suit hood/housing: Size H6B, H10B,H16B,H24B

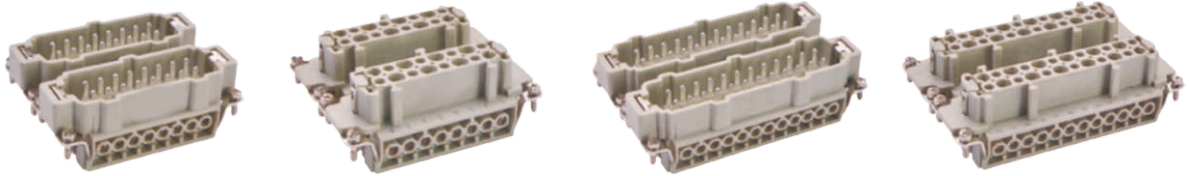
Hood/Housing detail on "Hood/Housing" section

SO-HE

Number of contacts

Insert 500V 16A

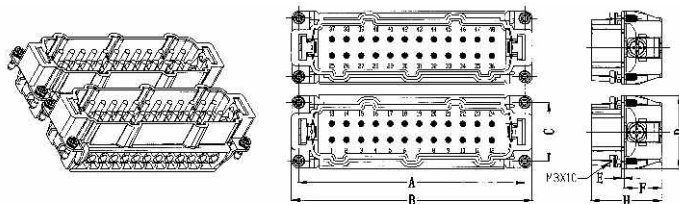
32,48 + \oplus



TYPE SO-HE-032-M SO-HE-032-F SO-HE-048-M SO-HE-048-F

Drawing(Dimensions in mm)

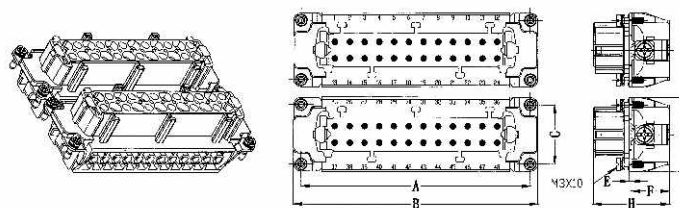
Male insert (M)



Male insert(M)

number of contacts	A	B	C	D	E	F	H
SO-HE-032	77.5	84.5	27	34	1.2	17.3	32.4
SO-HE-048	104	111	27	34	1.2	17.3	32.4

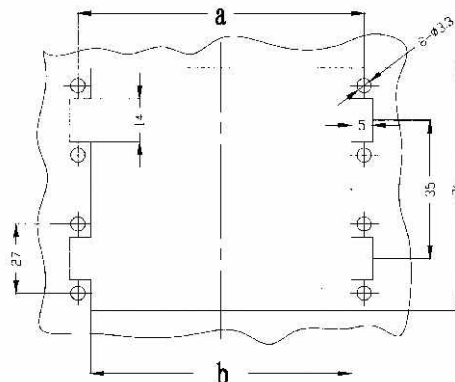
Female insert (F)



Female insert(F)

number of contacts	A	B	C	D	E	F	H
SO-HE-032	77.5	84.5	27	34	1.2	17.3	34.6
SO-HE-048	104	111	27	34	1.2	17.3	34.6

Panel cut out for inserts
for use without hoods/housings



Panel cut out

Size	a	b
SO-H32B	77.5	68.5
SO-H48B	104	95

Note: Suit hood/housing: Size H32B,H48B

Hood/Housing detail on "Hood/Housing" section