

# SJD-LED-1500

# SCHMID-M

## Features:

- Dc-Dc Step-Down Converter
- Constant Current
- High Power LED Driver
- Wide Input Voltage Range
- High Efficiency (Up to 95%)
- Remote Control Function :
- Dimming Function :
  - PWM / Analog Voltage control (0~100%)
- 24 Pin Dip With Industry Standard Package And Pinout



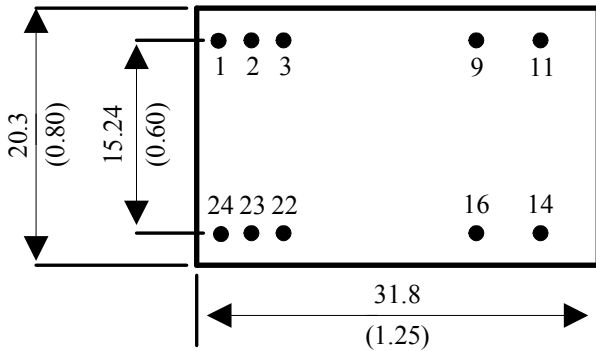
## Specifications: At nominal Input, rated output current and 25°C

- |                               |   |
|-------------------------------|---|
| ➤ DC Input Voltage            | 5-33V(24V Recommended)                        |
| ➤ Output Voltage              | 2-30V   |
| ➤ Output Current              | 1500mA (±5%Accuracy)                          |
| ➤ Efficiency at Full Load     | 95% max. (See Note 1)                         |
| ➤ Operating Frequency         | 260KHz  |
| ➤ Short Circuit Protection    | Regulated at the rated model current          |
| ➤ Output Open Protection      | No Load                                       |
| ➤ Capacitive Load             | 100uF max.                                    |
| ➤ Output Ripple and Noise     | 300mVp-p max.                                 |
| ➤ Case Material               | Nickel-Coated Copper with Non-Conductive Base |
| ➤ Potting Material            | Epoxy (Flammability UL94V-0)                  |
| ➤ Dimensions                  | 1.25×0.8×0.43 inches ( 31.8 × 20.3 × 11mm)    |
| ➤ Operating Temperature Range | -40°C ~ +70°C (Free air convection)           |
| ➤ Storage Temperature Range   | -40°C ~ +125°C                                |
| ➤ Remote ON/OFF               | DC ON Open or 0V < V <sub>R</sub> < 0.6V      |
| (Leave open if not used )     | DC OFF 0.6V < V <sub>R</sub> < 5V (1mA max.)  |
| ➤ Dimming Control             | 200Hz PWM Frequency (10%~90%)                 |
| (Leave open if not used )     | Analog Voltage (0%~100%)                      |
|                               | 0~4.5V (1mA max.)                             |
| ➤ Relative Humidity           | 95%   |

# HIGH POWER LED DRIVER

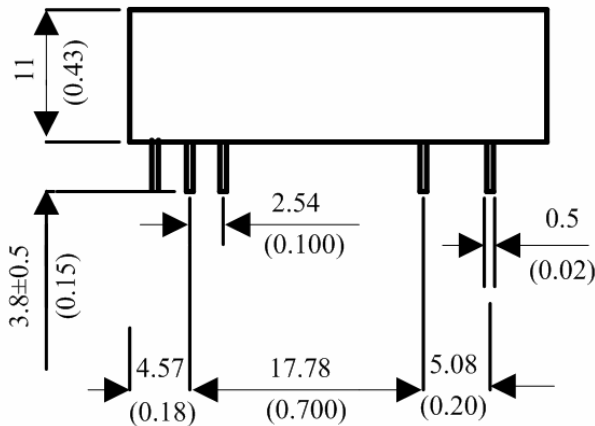
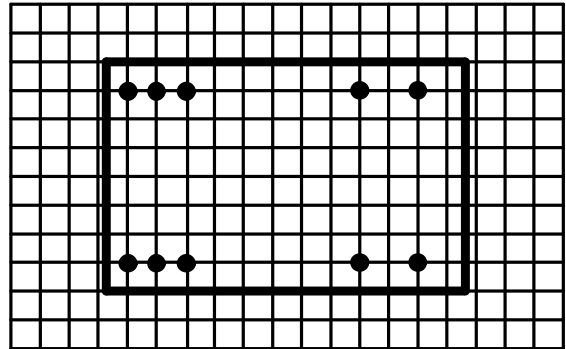
## Mechanical Specifications:

Bottom View



Recommended Pin Patterns

Bottom View (2.54mm / 0.1inch grids)



Pin Connections:

Pin	
1	Remote Control On/Off
2 & 3	-Vin
9	NC
11	NC
14	LED+
16	LED -
22 & 23	+Vin
24	DIM

NC : No Connections

Tolerance	Millimeters	Inches
	.X ± 0.25	.XX ±0.01
	.XX ±0.25	.XXX±0.01
Pin	±0.05	±0.002

### Note:

1. All specifications are typical at  $T_a=25^{\circ}\text{C}$ , nominal input voltage, resistive load and current unless otherwise noted.
2. Specifications subject to change without notice.

# HIGH POWER LED DRIVER

## Application Circuits:

